

COREFIX[®] CONNECT

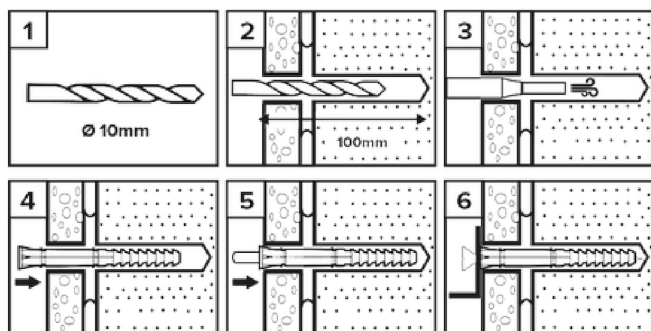
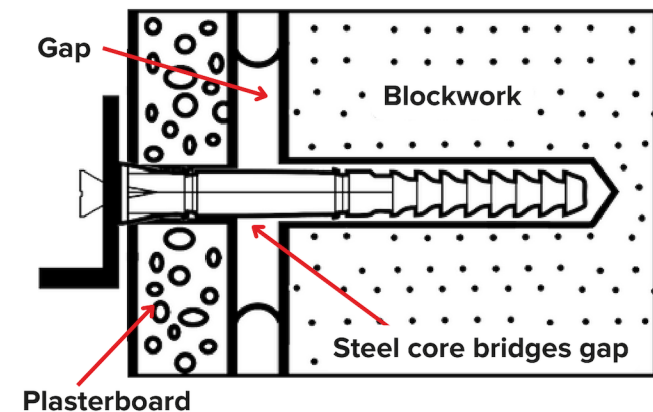
FEATURES

- Suitable for Dot & Dab plasterboard over all types of brick, stone and blockwork, including aerated/lightweight blocks.
- Heavy-duty steel reinforced fixing, tested to 250kg on 4 fixings.
- Steel core transfers the load to the solid wall behind the plasterboard and prevents plasterboard crushing.

APPLICATIONS

- Radiators
- Boilers
- TV Brackets
- Sinks
- Cabinets
- Shelves

INSTRUCTIONS

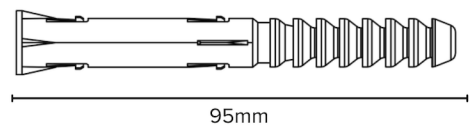


- Turn off hammer action on drill when drilling into lightweight/aerated blocks.
- Always check for cables and pipes before drilling and use suitable PPE.
- Independently tested on plasterboard with blockwork behind.
- Not recommended for cantilever brackets.
- Always refer to manufacturer's instructions when installing anything with Corefix and use the recommended number of fixings.

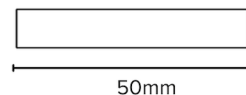
UK Patent Number GB2562446A



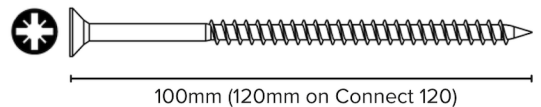
Ø10mm



Ø8mm



Ø5mm



TECHNICAL DATA

	Connect 100	Connect 120
Drill diameter	10mm	10mm
Min. hole drill depth	100mm	100mm
Screw diameter	5mm	5mm
Screw material	Steel	Steel
Plug length	95mm	95mm
Plug material	Impact resistant PP copolymer	Impact resistant PP copolymer
Max. fixture thickness	10mm	30mm
Safe Working Load (Shear, single fixing)	55kg / 40kg*	55kg / 40kg*

Notes: Factor of safety of 2. Data is for static loadings.
*Aerated/Lightweight concrete